

**Directory of Training & Education
Study Days for Nurses & Allied Staff**

Nurse Education & Training Solutions

2017



**On/off site Training
Programs designed to
meet HIQA and other
Statutory Body
Requirements**

ne-t-s

Nurses Education & Training Solutions

www.nursetraining.ie

091 396488

086-8338097

Email; info@nursetraining.ie




Contents

About the Facilitator and contact details	Page 4
Foreword	Page 5
Training Room Facilities	Page 6
Training Room Facilities	Page 7
Training Room Facilities	Page 8
Best Practice in Medication Management	Page 9
End of Life Care	Page 10
Infection Control	Page 11
National Policy on Restraint	Page 12
Overview of Dementia	Page 13
Safeguarding Vulnerable Adults	Page 14
Person Centred Care	Page 15
Early Warning Training	Page 16
Risk Evaluation and Management	Page 17
Clinical Supervision and Mentorship	Page 18
Counselling Skills Workshop	Page 19
Communication in End of Life Care	Page 20
Preparation of a Professional Portfolio	Page 21
Best Practice in Wound Care	Page 22
Pain Management Workshop	Page 23
Behaviours that Distress in Dementia Care	Page 24
Venepuncture and Cannulation Skills Workshop	Page 25

Tracheostomy Study Day	Page 26
Documentation in Clinical Care	Page 27
Administration of Subcutaneous Fluids	Page 28
Management and Prevention of Falls	Page 29
Administration of Intravenous Medication	Page 30
Diabetes Care in Elderly Settings	Page 31
Spiritual Care at End of Life	Page 32
Male/Female Catheterisation / Suprapubic Re-Catheterisation	Page 33
Peg Tube Management	Page 34
Three Day Dementia Care Programme for Nurses	Page 35
Nutrition in the Elderly	Page 36
Continence Care in the Older Person	Page 37
Manual and People Handling	Page 38
Stress Management	Page 39
Food Safety for Healthcare Professionals	Page 40
Education and Facilitation Skills for Nurses	Page 41
Meaningful Activities in Dementia Care	Page 42
First Aid Training	Page 43
Overview of Courses	Page 44

Nurse Education & Training Solutions

To enquire about onsite training at your facility or other dates, times and venues for offsite training email info@nursetraining.ie Ph. 091 396488 or **086-8338097**

You can visit our website on www.nursetraining.ie and Nurse Education & Training Solutions (NETS) can also be found on  [Facebook](#).

Ann Gardiner.



A highly qualified Specialist Nurse and Tutor with extensive experience both at operational and strategic level whilst employed in United States of America , Britain and Ireland. Ann is on the general and the tutors division of The NMBI Register. Courses have been accredited at Category 1 or 2 by NMBI where appropriate . Ann holds a Masters Degree in Nurse/Midwifery Education, A Higher Diploma in Palliative Nursing and A Diploma in Psychology of Counselling. She has worked in a diverse range of areas including end of life care as a Clinical Nurse Specialist in the homecare setting, intravenous nurse clinician in the community USA and developing and delivering education programmes in healthcaresettings in Ireland. All programmes delivered by Ann are underpinned by best practice, national and international guidelines and carry nationally recognised CEU's.

Foreword

Nurse Education & Training Solutions provide a comprehensive range of education and training services to healthcare facilities and professionals in a wide range of general and specialty areas. Education and Training is delivered by a team of experienced nurse educators. Courses are for nurses primarily but are open to healthcare assistants and allied professional employees where appropriate. Training is accredited at Category 1 or 2 by NMBI where appropriate. Onsite training can be arranged at your facility and certificates will be presented on the day of training. A range of courses are also run at locations around the country for individuals who wish to update their skills in a specific area. List of courses available on request and can also be found on Facebook and on our website at www.nursetraining.ie The aim of Nurse Education & Training Solutions is to provide a high standard of education and training to healthcare professionals in an efficient and cost effective service to healthcare providers and employees. An inclusive approach to education is fostered and the courses are evaluated on an ongoing basis to ensure participant satisfaction with the programmes. Nurse Education & Training Solutions is attuned to emerging trends and local needs in a rapidly changing healthcare environment and is adaptive and flexible in developing new courses to meet these requirements. Training is reflective of current legislation and underpinned by national and international guidelines set down by relevant governing bodies. It is in line with HIQA Guidelines and NMBI Requirements as well as European and Global Directives for Better Safer Practice in the delivery of healthcare in an evolving and challenging healthcare system.

Training Room at Nurse Education & Training Solutions



A wide variety of courses are run at our base in Dalystown, Loughrea, Co Galway approximately 5 km east of Loughrea. We are easily found on Googlemaps.

A list of course dates available upon request



Refreshments provided onsite!



WORKPLACE TRAINING

- Manual Handling
- People Moving & Handling
- Occupational First Aid Training
- Plus a wide range of Healthcare Training



Prop: Ann Gardiner



**Courses can be delivered
at NETS training centre
or at your workplace.**



**Excellent quality
training at very
competitive rates.**

Contact:

Email: info@nursetraining.ie

091 - 396488

086 8338097



Best Practice in Medication Management

Aim: To provide participants with a comprehensive overview of safe administration and management of medications. To explore the Roles and Responsibilities of Nurses and Midwives according to local, national and international best practice based on 2016 NMBI Update.

Course Outline: Medication errors and near misses, causes, trends, patterns and categories. What we can do to minimise them? High risk medications examined. Overview of 2016 guidelines provided to ensure safe practice. Fitness to practice issues in relation to medication errors. The '10'Rights. Remote Orders. Special circumstances like covert medication administration, refusal, crushing etc.

Objectives: To become aware of and understand An Bord Altranais Guidelines on Best Practice in Medication Management and demonstrate ability to put them into practice in the clinical setting.

Gain up to date knowledge in latest evidence underpinning safe practice in managing medications. Utilise a risk management approach and understand consequences of poor practice.

Target Audience: All nurses and midwives involved in administration of medication in any setting, acute and long term care. This study day can be provided onsite at your facility. For off-site training contact facilitator for suitable dates and venues.



End of Life Care

Aim: To explore principles and practice of palliative/end of life care of people with catastrophic and life limiting conditions. To provide nurses and allied health professionals with the skills and tools to support people in their 'End of Life Journey' in what matters to them.

Course Outline: Overview of the philosophy of end of life care. Casting a wider net to care for conditions other than cancer. Management of pain and of other distressing symptoms. Spiritual pain. Comfort measures in the last days of life. Grief and Loss.

Objectives: To Develop a comprehensive understanding of the basics of End of Life Care. To provide a framework to explore challenging and emotive issues surrounding end of life wishes and develop a system to assist healthcare professionals to acquire effective communication skills in this area. Encourage and promote the importance of self awareness and self care whilst working in end of life settings and equip health professionals to provide effective symptom control to terminally ill patients and to promote optimal quality of life for those affected by a life limiting illness.

Target Audience: Nurses, healthcare assistants and allied health professionals with an interest in end of life care. Those employed in hospital and long term residential care settings as well as community nurses and those working in end of life care facilities.

Best Practice in Infection Control



Aim: To provide an up to date working knowledge of the general principles and best practice in infection prevention and control

Course Outline: This course gives a basic understanding of microbiology and shows clearly how infections spread directly and indirectly. A comprehensive overview of standard and transmission based precautions is provided. UV Light Box to highlight importance of Hand Hygiene followed by individual demonstrations. Use of personal protective equipment. Health and safety and risk management issues in infection control. Overview of common infectious diseases and blood borne viruses. Management of difficult situations in infection control such as MRSA, C Diff, ESBLs, TB, HIV, Hepatitis and other current challenges.

Objectives: To provide clear and consistent guidelines on Best Practice in Infection Prevention and Control underpinned by current research and evidence based practice. Participants of this programme will be equipped to play an important role in infection control in their workplace on completion of the training day.

Target Audience: Anyone interested in updating their knowledge of infection prevention and control in healthcare settings.



National Policy on Restraint

Aim: The aim of this workshop is to give a comprehensive overview of the National Policy on Restraint. It equips the participants with the knowledge and skills to use the policy effectively and it helps them understand the limited, exceptional circumstances in which restraint can be legally employed

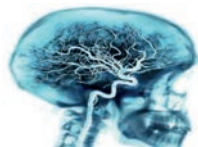
Course Outline: It comprises of four modules:

- Introduction to national policy on Restraint
- The law and restraint
- Procedures in relation to restraint
- Guidelines, resources and decision making in relation to restraint

Objectives: After participating in this workshop the participants will be able to safely and effectively use the national policy on restraint in their everyday practice in the clinical area where they work.

Target Audience: This workshop is directed at any and all nurses, healthcare assistants and allied healthcare professionals who work in elderly care settings where restraint is an issue of concern.

Overview of Dementia Care



Aim: To provide a comprehensive overview of dementia care for nurses, healthcare assistants and allied health professionals.

Course Outline: This course provides an understanding of Dementia in its various forms, lewy body, multi infarct, frontal lobe and others, addressing the complex needs of persons with dementia. It encompasses person centred care, communicating with dementia patients, behaviours that challenge like wandering, aggression and repetitive behaviours. It explores the benefits of creating a dementia friendly environment. It focuses on approaches like the ABC Technique and distraction therapies for behaviours that challenge. Ethical issues in advanced dementia care are explored It also looks at the influence of culture on attitudes and practice in relation to illness, ageing and dementia. It focuses on HIQA Thematic Guidelines

Objectives: It aims to equip participants with the knowledge and skills to better care for persons with dementia using a person centred approach. It provides them with tools and resources to assist them in their work in the dementia care setting.

Target Audience: This programme is aimed at nurses, healthcare assistants, and allied healthcare professionals who work with persons with dementia and who wish to develop their skills and expertise in the area of dementia care. Roleplay and groupwork make it more interactive and enjoyable.

Safeguarding Vulnerable Persons at Risk of Abuse

Aim: To provide a comprehensive overview of the types of elder abuse and equip participants with the knowledge and skills to assist them in recognising and responding to concerns regarding signs of abuse in the vulnerable older person or person with a disability.

Course Outline: Provides a definition of abuse and an outline of the most common types, including physical, psychological, sexual, financial, discrimination, neglect and acts of omission. Guidelines on responding to concerns and on reporting abuse outlined. Comprehensive overview of the updated national policy on elder abuse and a DVD of the various types shown accompanied by a workbook which allows participants to frame a discussion and questions and answers around it.

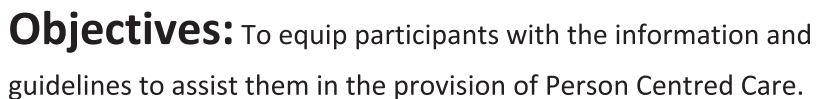
Objectives: To equip participants with the information and guidelines to assist them in the protection of elderly people who are vulnerable to various types of abuse and to know how to identify signs of abuse and to know how and when to report it.

Target Audience: This course is open to all nurses, healthcare assistants, and allied healthcare professionals who work with vulnerable people in the elderly care and disability sector.





Course Content: How to put the person at the centre of Care!!

Page
15



Early Warning Score Training for Nursing Homes

Aim: This education programme is designed to enhance health professionals understanding of patients who are clinically deteriorating and the significance of altered clinical observations. It is based on an Australian Model which has been modified to suit the Irish Healthcare System with particular emphasis on Nursing Homes.

Course Outline: This programme incorporates education on the use of the National Early Warning Score. It focuses on:

- Categorisation of patients' severity of illness
- Early detection of patient deterioration
- Use of a structured communication tool (ISBAR)
- Promote early medical review, prompted by specific triggers
- Use a definitive escalation plan

Objectives: This programme aims to improve communication between healthcare professionals, while adopting a patient centred quality driven approach, and enhancing timely management.

Target Audience: It is directed at nurses working with older residents in nursing homes.

Risk Evaluation and Management

Aim: This programme aims to help healthcare professionals to see the tangible benefits from risk assessment and good risk management principles.

Course Outline: Step by step risk management, how to spot, record, report and manage risks in order to prevent harm. High risk areas highlighted and explained. Look at situations, activities, equipment. What might need assessing? Health, food risks, incident planning. Implications and process explored.

Objectives: To provide a practical, time saving and helpful way to identify risks using a comprehensive approach and to set in place a risk management plan to avert danger to patients, residents, staff and visitors.

Target Audience: All healthcare employees interested in receiving an update on Risk Assessment and Management.



Clinical Supervision and Mentorship in Healthcare Settings

Aim: This programme aims to support nurses, healthcare assistants and allied healthcare professionals who provide supervision to students and less experienced colleagues in the course of their work. It provides a framework of support to assist them in adjusting to the role of mentor or supervisor.

Course Outline: It focuses on role definitions, effective communication, team work, dealing with change, giving support and being supported, reflective practice, dealing with stress, training and skill development, professionalism, best practice issues, personal development plan, the role of your manager.

Objectives: This course seeks to provide a framework of education and support to healthcare professionals who have assumed a role which necessitates the provision of supervision and mentorship to colleagues.

Target Audience: This course is suited to all professionals who provide supervision and mentorship to less experienced colleagues in the clinical or residential care setting and is particularly useful to people who have been promoted to a senior staff nurse role or senior healthcare assistant's role as it works with management to put in a support structure for staff, in order to assist and support them in their new role. It provides an opportunity for follow up within three months to review how coping and adaptive strategies learned during the training day are working for participants.



Counselling Skills to enhance the Therapeutic Relationship in Healthcare.

Aims: To create the space for nurses and others to consider the importance and value of effective counselling skills in the everyday practice of nursing and caring.

Course Content: To provide an overview of the various approaches to counselling and explore the nurse's role. To look at various definitions of 'counselling' and share our own experiences of how it fits in with our work with clients. The central tenets of the therapeutic relationship will be discussed. A comprehensive overview of effective communication skills is given focusing on the 'counselling relationship.' The importance of self awareness and boundaries. We explore what constitutes a 'crisis' in counselling, breaking bad news, knowing your limits and referring on... We also look at sources of practical advice and support, issues of trust, working with diverse personality types, directive and non-directive approaches and therapeutic use of 'self' in the counselling process.

Objectives: To provide healthcare employees with the language and skills necessary to improve their counselling technique in their daily work.

Target Audience: Anyone interested in counselling.

Communication in End of Life Care

Aims: This course aims to equip healthcare team members with the skills to deal with complex communication problems and emotionally challenging situations. Effective communication skills underpin successful interactions with patients and families. This course also explores the pathway to effective communication within the multidisciplinary team.

Course Outline: A variety of approaches are used including role play, simulated scenarios, group discussion and structured feedback. This course supports the health professional to develop competence and confidence in their communication skills in an inclusive and supportive environment.

Objectives: This course aims to increase the awareness of the healthcare team members with regard to their communication skills. It will explore strategies that will enhance their ability to elicit the concerns of people with advanced illness and to deal more effectively with challenging communication situations.

Target Audience: This course is aimed at members of the multidisciplinary healthcare team who are working with people in End of Life Care. It can be adapted to groups from any setting to focus on their particular communication needs and concerns.



Developing a Professional Portfolio

Aims: This workshop is designed for nurses to gain an overview of the principles and processes behind developing and maintaining a professional portfolio. It provides a framework where they can showcase their ongoing professional achievements in line with the need for CPD to support their Professional Nursing Licence according to NMBI Standards.

Course Outline: Identify the appropriate nursing documentation for inclusion in a professional portfolio. Gain knowledge of the use of a portfolio in career development. Identify how professional portfolios promote professional practice. Gain knowledge of personal development planning, development of competence and the important use of reflective practice in the development of a professional portfolio.

Objectives: To provide nurses with a framework to develop a portfolio of their education and continuing competence development to satisfy the requirements of NMBI and the Nurses Act (2011) in line with Professional Standards.

Target Audience: All nurses and midwives on the NMBI Register who wish to develop a portfolio outlining their continuing professional development, education and competence according to the requirements of the Nurses Act (2011).

Best Practice in Wound Management and Pressure Ulcer Prevention

Aims: This course provides an overview of the assessment, treatment and management of wounds and pressure ulcers.

Course Outline: Definition and classification of wounds is explored. Wound healing and associated physiology, assessment tools and cleansing of wounds is covered. It provides a comprehensive overview of the National Wound Care Guidelines and up to date evidence to support best practice in wound care. Management of leg ulcers, diabetic foot and pressure ulcers discussed.

Objectives: The course aims to equip nurses to manage wounds more effectively and to provide an update on pressure ulcer prevention. It provides a framework for effective wound assessment and criteria for choosing appropriate wound dressing.

Target Audience: The course is designed for all nurses and other healthcare professionals involved in or interested in best practice in wound care.



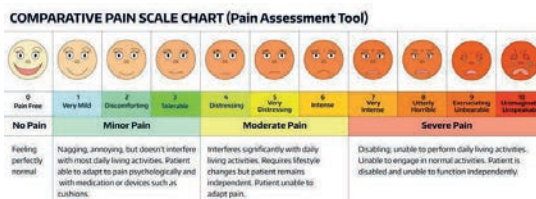
Pain Management Workshop

Aims: To enhance nurses and allied health professionals knowledge and skills in the area of pain management in elderly care settings using a person centred approach.

Course Outline: This programme provides a comprehensive approach to assessment and management of pain. It focuses on pharmacological and non pharmacological methods. Overview of ASK & LISTEN Approach. It discusses pain types and effective approaches and explores Pain Assessment Tools. It provides an overview of the psychological consequences of unresolved pain and looks at use of the World Health Organisation's 3 step pain ladder. The concept of 'Total Pain' is explored. Spiritual or 'soul pain' is part of the discussion around advanced cancer pain.

Objectives: This programme explores a holistic and comprehensive approach to pain assessment and management and empowers nurses and allied health professionals to meet the needs of patients who are in pain and to improve their quality of life as a result.

Target Audience: Nurses and allied health professionals involved in care of patients who are suffering acute or chronic pain across a wide variety of settings.



Behaviours that Challenge and Distress

Aims: The aim of the programme is to provide healthcare professionals with the skills to effectively respond to behaviours that challenge whilst protecting the dignity and safety of the person with dementia. It highlights the need for self care and support for colleagues whilst working in a dementia care setting.

Course Content: This course explores causes and consequences of behaviours that challenge. It looks at the types of behaviour that falls into this category and focuses on anger, aggression, wandering, and antisocial behaviour at mealtimes. It also includes an overview of triggers, warning signs, and concentrates on diffusing difficult situations using a variety of approaches including the ABC approach and other distraction therapies. It covers the effects of the 'sundowning' syndrome and makes suggestions to help ease distress for persons with dementia. It focuses on our own approach.

Objectives: It seeks to provide nurses and allied health professionals with the skills and knowledge necessary to cope with behaviours that challenge using a person centred approach whilst maintaining their own safety and supporting their colleagues.

Target Audience: This course will be of benefit to all healthcare professionals who work with clients who manifest behaviours that challenge in the clinical or residential setting.

Venepuncture and Cannulation Skills



Aims: This course aims to enhance the knowledge and skills of nurses in the area of Venepuncture and Cannulation and to provide a structured approach to safe and efficient practice in inserting an intravenous cannula and in obtaining blood specimens from adult patients. It is based on the National Framework of Venepuncture and Cannulation, (HSE 2010).

Course Content: It includes a review of the Scope of Practice in Nursing. It provides a comprehensive overview of the key principles for venepuncture and cannulation including infection control, safe disposal of sharps, blood borne viruses and risks involved, management of complications and aftercare and documentation. A clinical skills workshop is provided in the afternoon to practice the skills of venepuncture and cannulation on the training manikins allowing participants to practice in a supportive educational environment.

Objectives: This course will ensure competence and confidence in the area of IV Cannulation and Venepuncture of the nurses who attend.

Target Audience: This course is designed to facilitate nurses who wish to become proficient in Venepuncture.

Tracheostomy Study Day

Aim: This course aims to enhance the knowledge and skills of nurses in the area of Tracheostomy Care and to provide a structured approach to safe and efficient practice in providing skilled and holistic care to your clients. It is based on national best practice guidelines.

Course Content: It provides an overview of the anatomy and physiology of the airway and mechanism of swallowing. It follows a multidisciplinary approach to caring for a patient with a tracheostomy in place in various settings. It encompasses a reflection of the patient experience and advocates a compassionate patient centred approach to care. It overviews the most efficient use of resources.

Objectives: After this course nurses will be able to perform the skill of tracheostomy care safely and efficiently according to best practice guidelines.

Target Audience: This course is suited to any nurse interested in developing their skills in tracheostomy care. Residential Elderly Care Nurses, General and Mental Health Nurses, Paediatric and ICU nurses and any nurse who is expected to provide tracheostomy care as part of his/her role.

Facilitator: Ann Gardiner, Nurse Education & Training Solutions

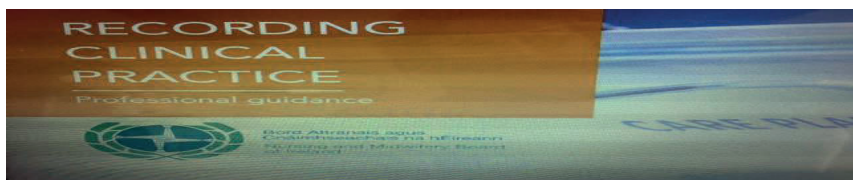
Documentation in Clinical Care; best practice guidelines

Aims: The aims of this programme are to assist nurses to understand their duty of care and responsibility in the area of best practice in documentation of clinical care.

Course Content: Introduction to best practice in documenting clinical care, continuity of care, individualised, up to date, factual and unambiguous approach, legibility, signatures and dates, timely documentation in chronological order, timed entries, abbreviations, accepted grading systems, errors, referrals and consultations, maintenance and storage of records, patient identification, instruction and supervision of students in documentation. Code of Professional Conduct for each Nurse and Midwife, Scope of Practice and other key Policies and documents that underpin best practice in recording clinical care. Legal issues in documentation.

Objectives: To provide nurses with best practice guidelines in recording clinical care.

Target Audience: All nurses who wish to update their knowledge in documentation and recording clinical care.



Subcutaneous Fluid Administration in Elderly Care and End of Life Settings

Aim: The aim of this half day workshop is to provide nurses with a comprehensive overview of the key principles of Administration of Subcutaneous Fluids in long term care and acute settings.

Course Content: Discussion and exploration of subcutaneous fluid administration as a safe and viable option to provide hydration in end of life care settings where prescribed and considered appropriate. Participants will learn about suitable client groups for this mode of treatment, ethical issues, calculations of drip flow rate, equipment required, skin site choice, procedure and local policy.

Objectives: The expected outcome of this day is to provide participants with the necessary knowledge to safely and effectively



manage subcutaneous fluid administration.

Target Audience: This course is open to nurses and healthcare practitioners from a variety of settings including long term residential care facilities, hospitals, intellectual disability services and community settings

Prevention and Management of Falls in Elderly Care Settings

Aims: The aim of this half day workshop is to assist healthcare staff to identify those patients or residents who are at risk of falls and to reduce that risk ultimately improving patient safety and minimising injuries in the elderly population.

Course Content: This half day workshop explores multifactorial risk assessments and interventions to reduce the risk of falls and minimise injuries in the elderly care setting. It looks at the roles of key multidisciplinary team members in falls management and at intrinsic and extrinsic factors as well as individual and environmental factors in risk management in relation to falls.

Objectives: The main objective of the workshop is to promote patient and resident safety by empowering healthcare staff with the knowledge and skills necessary to reduce the risk and impact of falls in elderly care settings.

Target Audience: This course is open to all healthcare employees who work in elderly care settings and who are interested in falls prevention and management and patient and resident safety.





Intravenous Drug Administration

Aims: The aim of this study day is to provide nurses with the theory and didactic components of intravenous drug administration in the clinical setting.

Course Content: The Scope of Nursing Practice and the main principles of Intravenous Drug Administration. Focus on infection control. Discussion of haemovigilance issues, pharmacological principles, bolus, intermittent and continuous infusions. An overview of the competency record provided.

Objectives: This course prepares nurses to safely and effectively administer Intravenous medications utilising a competency assessment framework to facilitate opportunity to develop skills with adequate supervision.

Target Audience: This course is directed at registered nurses who wish to pursue the skills of Intravenous Drug Administration using a competency assessment skill pathway.

Updates on Diabetes: Elderly Care Population.

Aim: This course is aimed at nurses who work with diabetics in the elderly care setting to provide them with best practice guidelines in diabetes care in elderly populations.

Course Content: Types of diabetes, epidemiology, treatments, choice of therapies, basic nutrients. Guidelines for practice regarding care of residents with diabetes in care homes. American Diabetes Association nutrition recommendations. Guidelines for the undernourished diabetic. Overview of protocol for monitoring blood glucose, aspects of hypoglycaemia. Therapeutic approaches to glycaemic control in diabetics in elderly care populations. Major specific geriatric disorders related to diabetes and insulin regimes, storage and delivery. Nurse's views, overview of diabetic services, resources and future trends.

Objectives: This programme was developed and designed to meet the demand for education of nurses working with the elderly population and was the direct result of an increasing demand from those nurses working with elderly diabetics for specific training for the elderly care setting. Course delivered by a Diabetes Nurse Specialist.

Target Audience: All nurses working with diabetic patients in the elderly care setting and those with an interest in gaining knowledge and skills in diabetes care.

Spiritual Care at End of Life

Aim: It is hoped that as a result of delivering this study day both nurses and palliative care patients will benefit. Nurses will benefit from better educational preparation and training resulting in them becoming competent and efficient practitioners in the facilitation of spiritual care. Patients will benefit by receiving efficient and focused spiritual care as they struggle to cope with life threatening illness.

Course Content: Exploration of the meaning of spirituality

and nurses perceptions, attitudes and awareness of patient's spiritual needs. Barriers to the provision of effective spiritual care. Spiritual care of those with life limiting illness. Religion versus spirituality; a non denominational approach.

Objectives: To provide a platform for discussion of spiritual issues and thus enhance self awareness of nurses in providing spiritual care.

Target Audience: All nurses and allied health professionals who wish to deepen their knowledge of Spiritual Care



and enhance their skills in delivering it..

Male Catheterisation, Female Catheterisation and Suprapubic Re-Catheterisation Study Days.

Aims: The aim of this program is to provide the skills and training necessary for safe and effective catheterisation of the male/female patient as well as the suprapubic re-catheterisation of clients where necessary.

Course Content: Introduction and overview of scope of practice as it pertains to Male/Female Catheterisation and Suprapubic Re-Catheterisation. Comprehensive overview of anatomy of male/female genito-urinary system. Review of best practice guidelines in catheter care and management. Principles and Practice of Infection Control as it pertains to Catheterisation. Exploration of potential complications of male/female/urethral/suprapubic catheterisation procedure and opportunity to practice the procedure under supervision on mannikins provided in a supportive educational environment.

Objectives: The aims of the program are to facilitate nurses with the skills for best practice in the area of male /female catheterisation and suprapubic re-catheterisation .



Target Audience: This course is suitable for all nurses.

Management and Replacement of



Gastrostomy Tubes

Aims: To provide education and training in the management care and replacement of gastrostomy tubes.

Course Outline: To explore issues around Scope of Practice as it pertains to Gastrostomy Tube Care and Management. Overview provision of best practice guidelines underpinned by evidence based research. Infection Control issues that may arise in the care and management of gastrostomy tubes. Types of tubes available. Tube position. Safe administration of medication via gastrostomy tubes. Management of potential complications are explored.

Objectives: The objective of the course is to provide a comprehensive overview of care and management of gastrostomy tubes to nurses and allied healthcare professionals who wish to expand their practice in this area.

Target Audience. Nurses and Carers in residential, social care and community settings.

3 Day Programme in Dementia Care

Aims: To provide a comprehensive training programme for nurses and allied healthcare professionals in Dementia Care.

Course Content: Growing Older. An overview of Dementia. Person Centred Care. Communication with the person with dementia. Creating a dementia friendly environment. Working with behaviours that challenge. Palliative care for people with dementia. Partnerships in dementia care. Use of Life Story Book. Use of DVDs to illustrate various effective approaches to coping with behaviours that challenge including the ABC technique and various distraction therapies. Group Work is used to assist participants to discuss the complex nature of caring for those with dementia. Role play is used to explore the most effective approaches to communication with persons with dementia. Brief overview of the Sonas Care Programme and it's advantages in the dementia care setting. The programme is run over the course of three days and can be provided onsite at your facility or at offsite convenient locations. It carries 15 CEU's for ABA registration.

Objectives: To enable all healthcare staff working in dementia care settings to build their knowledge, skills and confidence in the area of caring for persons with dementia.

Target Audience: All nurses, healthcare assistants and healthcare employees who work with persons with dementia.

Nutrition in the Elderly

Aims: The aim of the Nutritional Care Study day is to provide Health Care Professionals with an overview of the competency requirements in managing the Nutritional needs of the older person

Course Content: The content covered on the day will include the following; Defining Nutritional Care. Malnutrition. Factors that contribute to an older persons altered nutritional status and thus influences on care plans. Nutritional Assessment. Assessment, Planning, Implementing and Evaluating the care of an older person requiring nutritional support. Multidisciplinary team approach

Pharmacology and the Nutritional Status of the Older Adult. Ethical dilemmas in Nutritional Support for the Older Adult. National and Local Publications Protocols & Guidelines on Nutritional Care in the Older Adult– a review of the evidence. Assessment – critical review of case studies

Objectives: It is hoped that this program will inform all staff in the nutritional needs of older people and equip them with skills for best practice in this area.

Target Audience: This course is aimed at qualified nursing staff and has Category 1 Approval, CEU's Continuing Education Units from An Bord Altranais.

Contenance Care in the Older Person

Aims: The overall aim of this Contenance Care Course is to provide Health Care Professionals with an overview of the competency requirements in managing incontinence and promotion of continence in the older person.

Course Content: The training day will focus on the following issues:-

Overview of the urinary system and lower digestive system.
Principles of Contenance Promotion Factors that contribute to incontinence and thus influence continence promotion needs
National Publications Protocols & Guidelines on Contenance Care – a review of the evidence Assessment, Planning, Implementing and Evaluation of the care of an older person with continence needs –
The Nurses Role. Multidisciplinary team approach – Contenance Nurse Advisor, Role of Physiotherapist, Occupational Therapist, General Practitioner, Pharmacist Psychological and sociological implications of incontinence to the quality of life of the older adult -
Case Studies Review. Clothing for Incontinence

Objectives: To empower healthcare professionals to ensure best practice in the delivery of continence care.

Target Audience: All nurses and health professionals interested in continence care.

Manual Handling & People Moving and Handling

Aims: To provide participants with the skills and knowledge required to apply the correct techniques used in Moving and Handling tasks while promoting at all times the independence and dignity of the client and the carer.

Course Content: Manual Handling Legislation - as it applies to the employer and employee Anatomy of the spine and muscular system & mechanisms of injury. Ergonomic risk assessment. Principles of safe patient / manual handling Practice in safe handling of loads Practice in safe handling of clients, including use of handling aids. (Banana board, slide sheets, wheelchair). Overview on use of hoist (Note: Training in the safe use of hoist to be provided by supplier of hoist only) Assessment.

Objectives: Understand Manual Handling Legislation
Understand how to protect yourself, your colleagues, and clients
Identify the risk factors associated with patient moving and handling. Describe, and apply to your work, the principles of safe Moving & Handling

Target Audience: This course is suitable to anyone who wishes to become proficient in safe moving and handling techniques.

Stress Management in Healthcare Settings

Aims: To equip health professionals with knowledge and skills to manage stress more effectively and thus achieve a higher level of health and wellbeing to help cope with a demanding lifestyle.

Course Content: The following will be covered on the day:-
Understanding 'Stress' and how it differs from 'Pressure'
Identifying the main physical, psychological and behavioural effects of stress. Developing a range of strategies and techniques to tackle stress incl. relaxation skills, lifestyle management and stress mapping
The importance of diet, exercise and lifestyle in the management of stress. Stress Management and your Physical Health. Stress Management and your Mental Health.

Objectives: The objective of the course is to assist participants to become more aware of their own stress points and to develop skills to intervene early and manage their stress more effectively.

Target Audience: This course will suit anyone who wishes to develop their coping skills for a demanding working environment and a busy lifestyle. It focuses on healthcare environments in particular.

Food Safety and HACCP Guidelines

Aims: This course is designed to equip nurses and allied health care professionals with safe food practices to protect the patients and clients in their care.

Course Content: The course covers a broad range of subjects, including an overview of basic microbiology, food contamination, food hygiene law, personal hygiene, cleaning procedures and Hazard Analysis Critical Control Points (HACCP). These subjects are geared towards enabling food workers to see and understand where problems could arise in the preparation, handling, storage, distribution, or processing of food. These problems could, if uncontrolled, create a risk of food poisoning to the vulnerable populations in healthcare facilities.

Objectives: The objective of the Primary Course in Food Hygiene is to create an awareness and knowledge of food safety to those involved in providing food via a variety of means (nasogastric, gastrostomy, TPN, oral feeding) to patients, residents and clients in various healthcare settings and to promote the importance of good food hygiene practices.

Target Audience: This course is designed for all healthcare professionals who provide any role in feeding patients, residents or clients in healthcare facilities. **Note.** A higher level of training is required for Chefs and Cooks.

Teaching Skills for Nurses

Aims: This course aims to equip nurses with the skills they require to teach others. It provides the knowledge, skills and confidence to deliver a training programme based in their own area of expertise.

Course Content: The course provides nurses with a thorough understanding of the planning process that underpins effective teaching. It outlines the principles of adult learning and facilitation. It helps them to identify their own learning styles. • Discuss the concept of facilitation as an approach to adult learning. Identify the abilities and traits required by a facilitator to facilitate adult learning. Discuss a number of facilitative interventions and strategies used with adult learners such as understanding why small group work is used. Strategies used to encourage group work Common problems in facilitating group work. Need to evaluate all teaching methods. Planning and preparation Learning outcomes. Venues and equipment. Communicating, listening, assessing, evaluating.

Objectives: The objective of the training is to empower nurses to provide education and training to others in the workplace using a high standard, organised and efficient approach to learning.

Target Audience: Any nurse or allied healthcare professional who has a desire to teach and facilitate their own courses and training events more effectively.

Meaningful Activities in Dementia Care

Aims: This course explores the role of creative expression and meaningful activity as a healing and therapeutic tool in the area of Dementia Care.

Course Content: The course explores the therapeutic benefits of engagement in creative pursuits in person centred dementia care. It explores various diverse ways we can absorb clients in pleasurable activities tailored to their interests based on our knowledge of client's needs and wishes and life story. It explores reminiscence therapy and adapts current methods such as information technology to retrieve pertinent materials to underpin the creative activities we engage our clients in from music, film and the arts. Games, songs and activities to take clients on nostalgic journeys where appropriate. Use of memory boxes, scrapbooks and albums among a wide variety of approaches.

Objectives: The objective of the training is to provide nurses, activity co-ordinators, care assistants and many other allied health professionals with the knowledge, skills and attitude required to facilitate the clients in their care with Dementia

Target Audience: The course is open to anyone with an interest in creative and meaningful activities in the area of Dementia Care, particularly activity co-ordinators, care assistants, occupational therapists and nurses.



Occupational First Aid and First Aid Refresher Programmes available on request.

Aim of Programme: To prevent deterioration. Save a Life. Promote Recovery.

Content: First Aid in the Workplace.

Patient Assessment, Respiratory Emergencies. Cardiac First Response.

Wounds and Bleeding. Altered levels of consciousness. Musculoskeletal Injuries.

Burns and Scalds. Chemical and Electric Shock.

Target Audience: Anyone who wishes to learn or refresh first aid skills. 1-3 day courses available.



Nurses Education & Training Solutions

Courses Offered:

- Best Practice in Medication Management
- End of Life Care
- Infection Control
- National Policy on Restraint
- Overview of Dementia
- Recognising and Responding to Elder Abuse
- Person Centred Care
- Early Warning Score (COMPASS Training)
- Risk Evaluation and Management
- Clinical Supervision and Mentorship
- Counselling Skills Workshop
- Communication in End of Life Care
- Preparation of a Professional Portfolio
- Best Practice in Wound Care
- Pain Management Workshop
- Behaviours that Challenge in Dementia Care
- Venepuncture and Cannulation Skills Workshop
- Tracheostomy Study Day
- Documentation in Clinical Care
- Administration of Subcutaneous Fluids
- Management and Prevention of Falls
- Clinical Audit Skills for Nurses
- Administration of Intravenous Medication
- Diabetes Care in Elderly Settings
- Spiritual Care at End of Life
- Male Catheterisation / Suprapubic Re-Catheterisation
- Peg Tube Management
- Three Day Dementia Care Programme for Nurses
- Nutrition in the Elderly
- Continence Care in the Older Person
- Manual and People Handling
- Stress Management
- Non Violent Crisis Intervention
- Food Safety for Healthcare Professionals
- Education and Facilitation Skills for Nurses
- Meaningful Activities in Dementia Care



Prop: Ann Gardiner



**Onsite Training
at your facility
for large number
of employees at
competitive rates.**

Contact:

Email: info@nursetraining.ie

091 - 396488

086 8338097

www.nursetraining.ie

